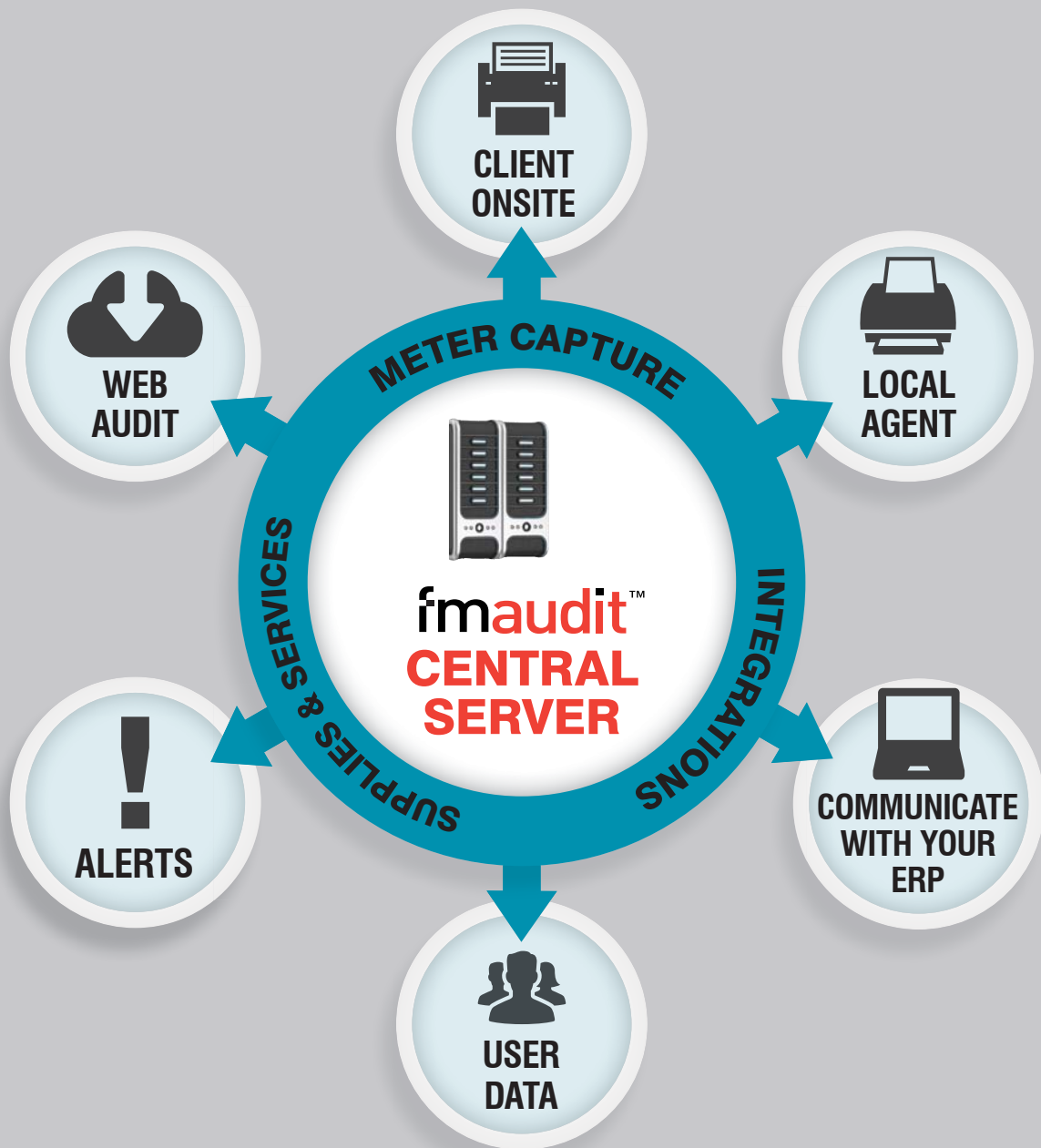


THE #1 Remote Monitoring and Management Solution

IN THE MARKET TODAY



EVERYTHING YOU NEED TO assess, analyse, propose, monitor and market your managed print services strategy.

How it works

The core engine of FMAudit accurately identifies and extracts data from networked printers, copiers and multifunction devices (MFDs) utilising the protocols these devices support such as Simple Network Management Protocol (SNMP). SNMP is a network protocol that facilitates the exchange of information between networked devices, extracting data from the management information base (MIB) and the data collection locations within the device. FMAudit supports SNMP Versions 1, 2 & 3. The MIB is an internal database that most network-connected devices have as part of their anatomy. The MIB holds data such as the manufacturer and model information, meter data, consumable levels and current and historical service and supply status of the device.



What is FMAudit comprised of?

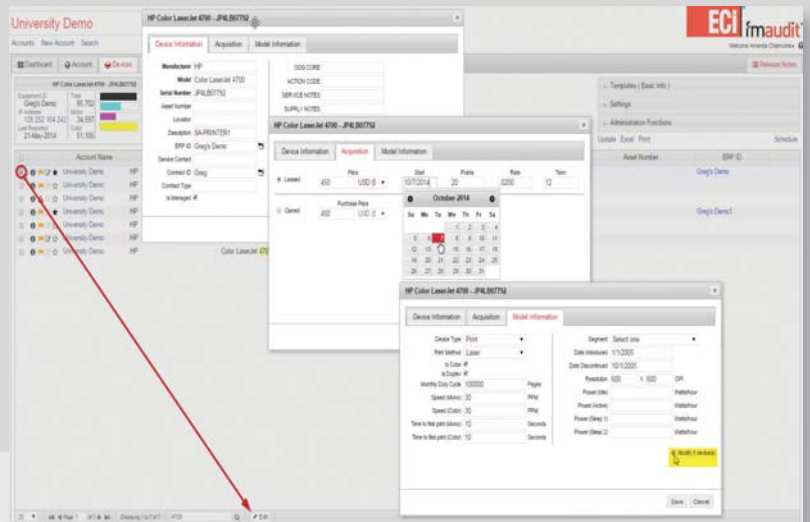
FMAudit Central Server is a cloud-based application that can be hosted by the dealer, Bizmann or a third party that stores all of the usage data from your clients' devices so it's easily viewable in a browser or on a mobile device giving you the ability to generate powerful reports. This information seamlessly integrates into your accounting, ERP or CRM software system.

FMAudit Onsite is a data collection tool that automatically performs device analytics, monitors consumable levels and equipment status. Installed at the customer site, this application can perform print assessments automatically on a scheduled basis.

FMAudit Local Agent
Capture meters for non-networked devices. Did you know? Up to 40% of printers are not connected to a network. Local Agent allows you to collect meters from local printers via an Agent Windows Service which communicates directly with devices and relays the captured data to FMAudit Onsite, enabling you to deliver (and bill for) a total managed print solution.

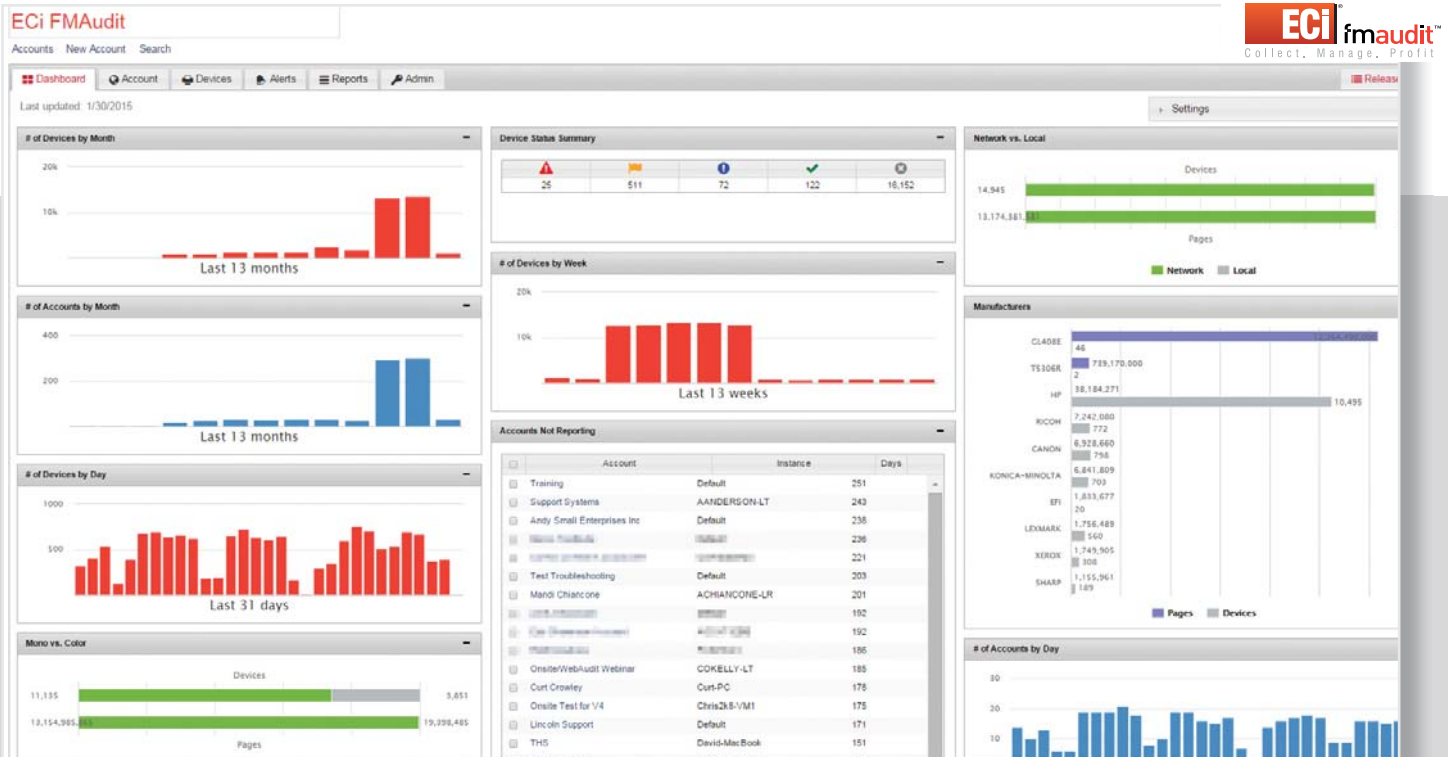
FMAudit Deployer

A tool developed by FMAudit designed to remove the complex and time consuming steps of managing the installation and updates of all the applications a dealer requires to fully implement their MPS program within an end user's enterprise.



FMAudit benefits

- 1. Enables** your information to be synchronised with your ERP system.
- 2. Gives** you the ability to offer automated toner replenishment for added revenue.
- 3. Relieves** the potential of human error associated with manual meter entry.
- 4. Allows** you to offer a customized program to control service and supply notifications based on data captured from your system.



FMAudit Central Dashboard

What can you do with FMAudit?

WebAudit

Collect meters without installing software

Other solutions may require you to install software on your clients' networks to capture meters. While we offer this option, WebAudit gives you the flexibility to capture meter readings through an innovative Web application launched directly within Central. Perfect for gathering meters at sites where customers are reluctant to install software.

TCO Reporting

Quickly uncover Total Cost of Ownership

With FMAudit, TCO assessment is easy with integrated reports that help you gain an understanding of your client's usage patterns. This is helpful in both generating proposals for the initial sale and provides reports to discuss during quarterly reviews with the client.

Supply Triggered Sales

Sell supplies for non-managed devices

Chances are, you only manage a percentage of a clients' print and MFP assets with cost-per-click contracts. Wouldn't it be nice if you could sell supplies to non-managed devices? Now you can!

When a customer's toner cartridge is almost empty, this feature sends an email to your client with a link to your toner store.

Supply Triggered Delivery

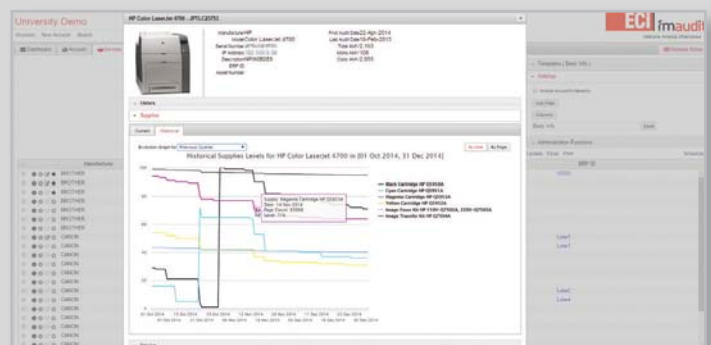
Now managing toner inventory is as easy as 1, 2, 3!

How it works:

1. You set the remaining supplies percentage level or days remaining for printers under contract (you can set global defaults by device type or individually based on historical usage).
2. When a device hits the triggered value you specified, it generates a shipment order which is sent to your ERP (or billing) system.
3. The consumable is shipped to the client.

Bi-Directional Communication

Empowered by a robust API, FMAudit's approach to data synchronisation provides two-way communication with your accounting and dispatch systems. Not only that, FMAudit can also query your ERP system, helping automate the reconciliation process.



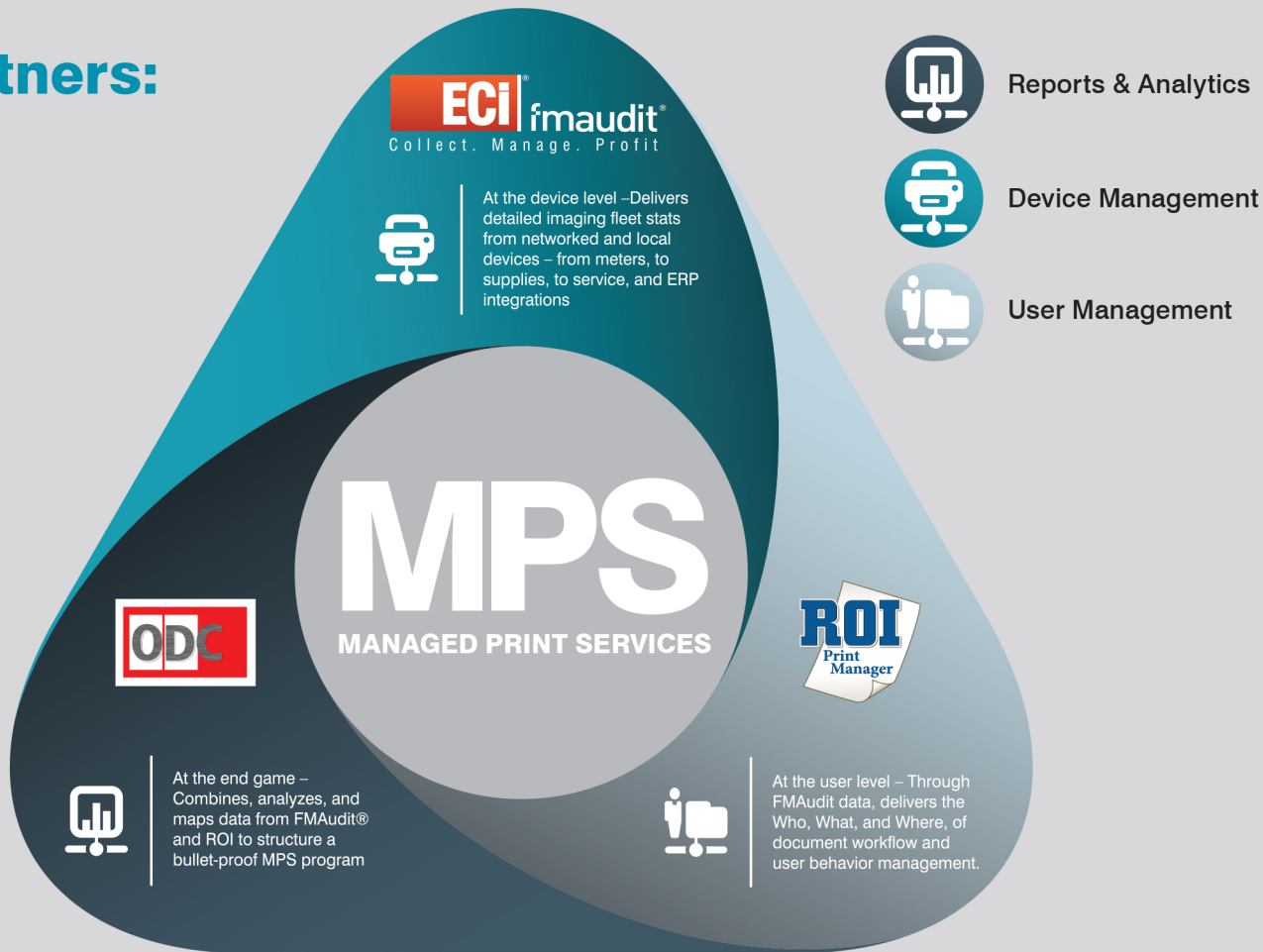


From a management perspective, the automated meter reads and volume data from FMAudit have allowed us to provide our customers with a complete solution and capture prints that with other systems we have previously missed. PrintSolv/FMAudit continue to make improvements and modifications and their back up team is both proactive and professional



DAVID WHEELER, MANAGING DIRECTOR - RBC SOLUTIONS

Partners:



ODC

Mapping and Assessment

Office Document Consulting is one of the global leaders in fleet optimisation software. Its core product, DOCassess, uses the data from Onsite and allows users to map their current state on floor plans, establish total cost of ownership, automates fleet optimisation building a proposed or future state all summarized in a professional proposal document.

ROI

User Data and Analytics

Extending FMAudit data into robust end-user analytics, dealers will have the ability to visualise the “who, what, when and where” of document workflow within FMAudit software. The integration of ROI allows dealers the opportunity to develop a more structured managed document services program, by knowing who is printing, how much they are printing, at what cost, what applications they are printing from, and where the peaks and dips of volumes are in their fleet.

Schedule a demo with Bizmann Systems TODAY!



+65 6271 1911 . www.bizmann.com

ECI, FMAudit and the ECI Red Box logo are trademarks or registered trademarks of eCommerce Industries, Inc. All rights reserved.

